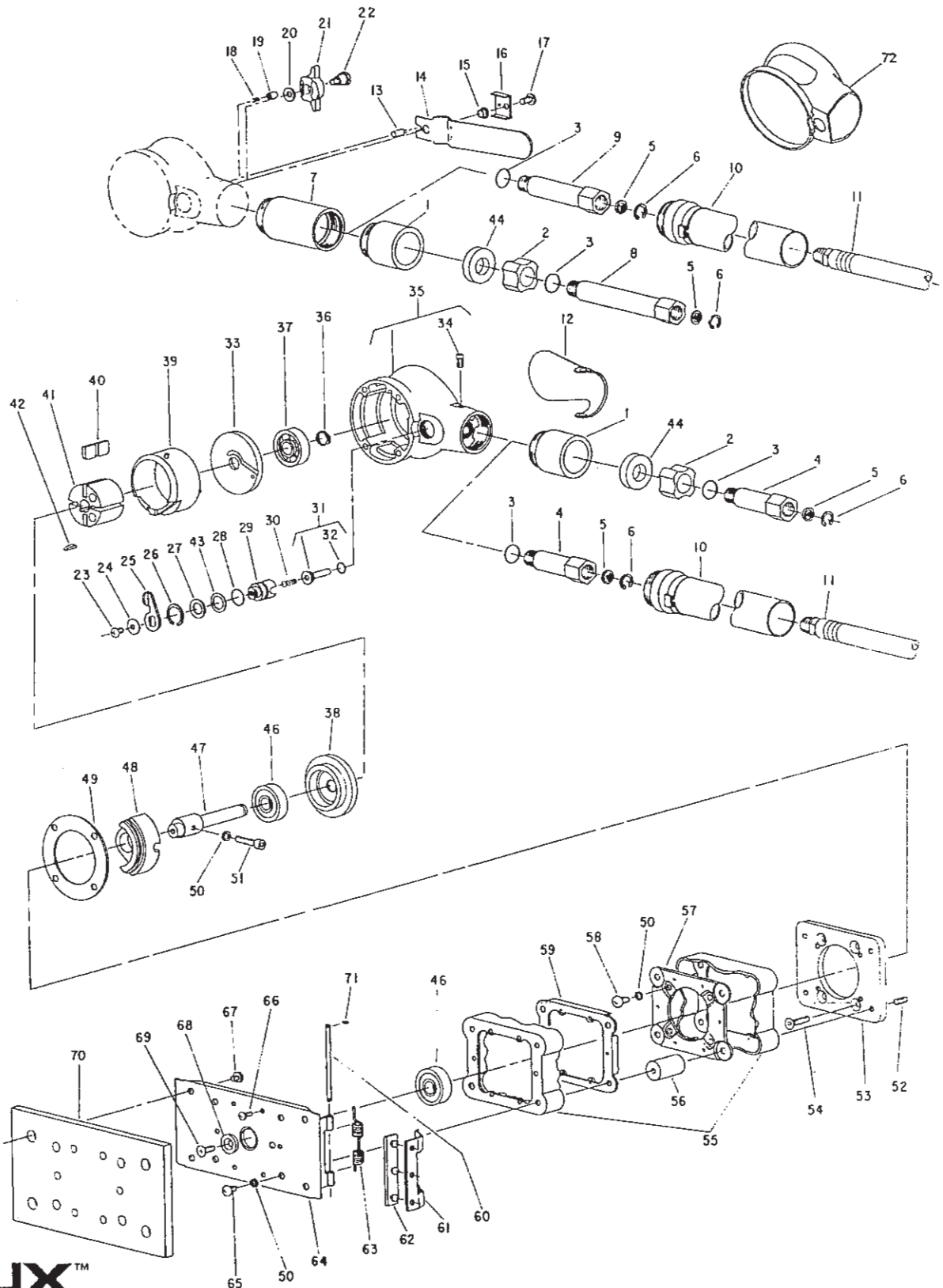




PARTS LIST FOR ORBITAL SANDER 702 & 730 INCLUDES H, T, & X SUFFIXES (SERIAL "A")

Form Z346
Date 8-96



**SIoux™
TOOLS INC.**

2901 FLOYD BOULEVARD ■ PO BOX 507 ■ SIOUX CITY, IOWA 51102-0507 ■

Printed In U.S.A.



PARTS LIST FOR ORBITAL SANDER 702 & 730 INCLUDES H, T, & X SUFFIXES (SERIAL "A")

Fig. No.	Part No.	Description	Fig. No.	Part No.	Description
1.	64129	Housing—Muffler	39.	64125	Cylinder
2.	04328	Spacer	40.	33597	Vane—Rotor (Set of 4)
3.	14309	Ring—"O" (1/16 x 1/2 x 5/8)	41.	66327	Rotor
4.	64131	Adapter—Intake	42.	30001	Key—Woodruff
5.	30463	Screen	43.	41338	Washer—Wave
6.	21541	Ring—Retainer	44.	05049	Pad—Silencer
7.	64130	Handle	46.	10210	Bearing—Ball (2)*
8.	64124	Adapter—Intake (Long)	47.	64138	Spindle—Rotor
9.	64137	Adapter—Intake (Remote Exhaust)	48.	11371	Counterweight
10.	63561	Ass'y—Exhaust Tube	49.	05038	Gasket
11.	1376	Ass'y—Air Hose	50.	09724	Washer—Lock #10 (9)*
12.	35633	Lever—Valve (Palm Grip)	51.	07093	Screw—Hex Socket Hd. Cap #10-32 X 7/8
13.	54130	Pin	52.	07176	Screw—Hex Socket Cup Pt. Set #10-32 x 1/2 (4)*
14.	35842	Lever—Valve	53.	64139	Plate—Adapter
15.	64143	Sleeve	54.	07262	Screw—Flat Hd. C' Sunk #10-32 x 5/8 (Tap) (4)*
16.	35851	Cover	55.	14332	Boot—Flexible
17.	07225	Screw—Phil. Pan Hd. #10-32 x 3/8	56.	43682	Mounting—Flexible (Set of 4)
18.	21392	Spring	57.	35105	Plate—Motor Retainer
19.	44753	Plunger—Location	58.	07225	Screw—Phil. Pan Hd. #10-32 x 3/8 (4)*
20.	35234	Washer (4)* [(5)* When Used With Thumb Throttle]	59.	33558	Ass'y—Boot Retainer
21.	11603	Throttle—Thumb	60.	64144	Pin (2)* [Includes (2) Fig. 71]
22.	44763	Screw—Shoulder	61.	35853	Clamp (2)*
23.	06672	Screw—Phil. Rd. Hd. #8-32 x 1/4"	62.	04330	Pad (2)*
24.	41336	Washer—Belleville	63.	41337	Spring—Torsion (2)*
25.	35634	Lever—Output Control	64.	63571	Ass'y—Sole Plate
26.	21826	Ring—Retaining	65.	07208	Screw—Phil. Rd. Hd. Cone Pt. #10-32 x 3/8 (4)*
27.	25680	Washer	66.	06240	Screw—Phil. Rd. Hd. Sems #6-32 x 3/8 (6)*
28.	14312	Ring—"O" (1/16 x 7/16 x 9/16)	67.	07203	Screw—Phil. Rd. Hd. Sems #10-32 x 1/4 (4)*
29.	64132	Control—Output	68.	34970	Washer
30.	21211	Spring	69.	07169	Screw—Phil. Flat Hd. #10-32 x 1/2
31.	66637	Stem—Valve	70.	63566	Ass'y—Rubber Pad (3 2/3" x g")(630)
32.	65289	Ring—"O" (1/16 x 1/4 x 3/8)		33559	Ass'y—Rubber Pad (3" x 8")(602)
33.	66334	Plate—Upper End	71.	21499	Ring—Retaining (2)*
34.	06205	Screw—Fillister Hd. #6-32 x 5/16 (2)* Tap	72.	66667	Boot—Rubber (702, 702X, 730, 730X)
35.	66339	Housing [Also Includes (2) Fig. 34 & (4) Fig. 54]			
36.	21545	Ring—Retaining			
37.	10113	Bearing—Ball			
38.	64126	Plate—End			

*Order Quantity As Required

FURNISH CATALOG, SERIAL, AND MODEL NUMBER
WHEN ORDERING PARTS

**SIoux™
TOOLS INC.**

2901 FLOYD BOULEVARD ■ PO BOX 507 ■ SIOUX CITY, IOWA 51102-0507 ■

Printed In U.S.A.